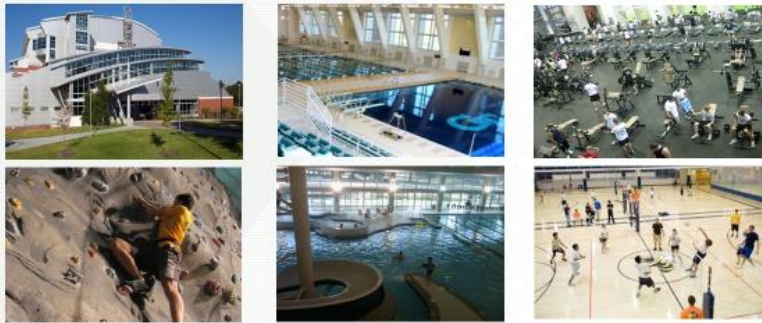


## Georgia Tech Facilities Available to Intensive English Program Students

### Campus Recreation Center



CRC- FREE Trail March 8th-15th  
CRC Membership \$30 per month



CREATING THE NEXT™

### Library



Open 24 hours a day seven days a week  
(with exception of some holidays and session breaks)

CREATING THE NEXT™

### Dining Services



Dining Halls, Food Courts,  
Starbucks and Tech Square  
Restaurants



Meal Plans, Dining Dollars, Buzz Funds

CREATING THE NEXT™

# Georgia Tech Student Center



CREATING THE NEXT™

# Student Health Center



- Immunizations
- Physicians
- Nurses
- X-ray Technicians
- Psychiatrist
- Pharmacist
- Dentist



To be eligible to use the Student Health Center, students must pay a fee at the beginning of each session.

CREATING THE NEXT™

# Campus Transportation



## Stinger Bus:

Circulates around campus  
Weekdays 7AM – 10PM (approximately every 24 – 30 minutes)

## Tech Trolley:

Midtown MARTA Station to campus  
Weekdays 6AM – 10PM  
(approximately every 9 - 12minutes)

Saturday 10AM – 6:30PM  
Sunday 3PM – 9:30 PM  
(approximately every 30 – 40 minutes)



CREATING THE NEXT™